



Shelton High Prospectus 2010

Vision

An institution of excellence where staff and students model the values of continuous learning, teamwork and respect in a caring and challenging environment.

Mission

We aim at making Shelton College International the premier career development and education center in Singapore and in the region by providing professional counselling and training services of the highest quality, and meeting the individual needs of our students in the most effective way.

Philosophy

We believe that every student has the potential to develop into holistic individuals with a strong academic foundation.

Contents

1. Introduction to Shelton

2. Shelton High

a. Academic Programmes

- Singapore-Cambridge GCE O-Level
- Singapore-Cambridge GCE A-Level

b. Sports, Arts and Community Service

- Co-Curriculum Activity (CCA)
- Community Involvement Programme (CIP)

c. Enrichment Programmes

- Golf
- Music
- Chinese Language

3. What's Next

4. Living in Singapore

5. Shelton Organisation

*Information is correct as at October 2009.

1.

Introduction to Shelton



Shelton High and Shelton College International is a premier learning institution that provides quality education. Shelton High prepares students to sit for the national Singapore-Cambridge GCE examinations. They may further their studies in Shelton College International or any other prestigious universities. Shelton College International offers students opportunities to graduate with degrees in Travel, Tourism & Hospitality, Business Management, Marketing, Human Resource Management, International Business, Accounting & Finance and Mass Communication.

Shelton has forged many partnerships with several schools abroad (such as South Korea, China, Indonesia, Vietnam and so forth) so that students can enjoy an international educational experience. Our partnership with Staffordshire University has also allowed many students to gain access to affordable and quality British education locally in Singapore. All our programmes (including Certificates, Diplomas & Degrees) are quality assured by our partner university.

Established in 1993, Shelton continues to expand. It received the Singapore Quality Class for Private Education Organizations (SQC-PEO) award in 2003 in recognition of its excellence in education and business. In 2005, it was awarded the Case Trust Certification for good practices protecting the welfare of students.

Campus & Facilities

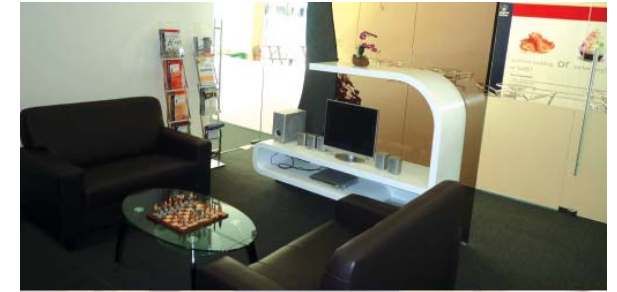


The beautiful and spacious campus is on sprawling grounds at Telok Blangah Rise, conveniently located a 5-minute drive to the heart of city. It is in close proximity to some of Singapore's popular tourist attractions, namely, Mount Faber, Henderson Wave and Sentosa Island. The campus also has easy access to VivoCity, one of Singapore's largest retail destination.

Facilities include spacious, air-conditioned classrooms fitted with audio-video equipment and computers, and both indoor and outdoor recreational venues.

Accommodation & Student Care

- Shelton provides hostel accommodation for approximately 250 students. The facilities include wireless internet access.
- There are three lodging options available:
- Full-boarding (four students per room, meals and laundry inclusive);
- Half boarding which includes a room shared by eight (meals and laundry with charges); and off campus lodging available through key partners.
- The Student Service department provides qualified counsellors to cater to students' needs. New overseas students will be picked up from the airport to our hostel. A sensational orientation programme welcomes overseas students. Evening study supervision is also provided.



"Shelton Student Care Service is personalised, professional and heart-felt. They care for my physical and mental well-being and make me feel at home."

Wenny Suliana Oey, O-Level Student 2009

Lecturer's Profile

- All lecturers are fully qualified and have intensive and extensive experience in working at local and overseas schools and colleges.
- Shelton High encompasses an international and multi-cultural teaching staff from all over the world such as Australia, Canada, South Africa, India and so forth.
- Lecturers are able to employ soft skills to uncover students' potential.
- Constant in-service training and professional development keeps teachers abreast with the latest teaching methodology.
- Shelton maintains an average lecturer to student ratio of 1:25.



"Holistic education at Shelton High enables our students to utilise knowledge that they have acquired to meet the life's challenges."
Mr Basil George, English Lecturer



"Humility, perseverance and compassion reveal the outcome of true education at Shelton High by our active Community Involvement Programmes."
Mr Zane Lao, Chemistry Lecturer



"Unity of minds, natural love and co-operation are the qualities we aim to develop in all our students through the Arts and Dance culture."
Ms Sareena Sabeena, Physics Lecturer



"We perpetuate the spirit of excellence academically and mentally to mould our students into future beacons of inspiration."
Ms Melanie Smedes, General Paper Lecturer



"Character, passion, values and development of true academic potential are the most precious gifts of Shelton High education to all our students."
Ms Lesley Christine Lim, CEO

"The heart of education is educating the hearts. Shelton High is the place to look for!"
Mr Oh-Kian Teh, Principal



2. Shelton High



Education Goal

Shelton High aims to produce holistic intellectuals who will uphold religious and moral values by being responsible to oneself, family, institution, society, nation and the global world.

Objectives

Shelton High's main objective is to mould students into highly educated, well-mannered and disciplined individuals. Through sound academic foundation and systematic co-curricular activities, students will learn the values of democracy, justice, and progress in order to face the new competitive millennium.

Customer Statutory Rights

Shelton High endeavours to

1. Produce highly motivated, educated and holistic individuals.
2. Expand the talents of the students by exploring their creative, critical, scientific, innovative and productive potentials.
3. Groom individuals who are able to face global challenges through continuous learning, team work and excellent services.
4. Uphold the ethics of world-class management, administration and education.

Principle of Academic Staff

To teach with love.

Shelton High offers an exclusive and holistic education, in academics, co-curricular activities, physical education and community services.

The school has a 4-year programme (Year 1-4) where students are offered a wide range of subjects leading to Singapore–Cambridge GCE O-Level Examination. This programme is recognised and approved by the Ministry of Education (MOE) and Singapore Examinations and Assessment Board (SEAB).

All students follow a structured curriculum pathway taught over 4 years in the O-Level Express Stream syllabus as outlined by the MOE. A strong academic foundation is built in Years 1 and 2, through interactive learning which fosters creative and critical thinking. Subjects offered are English, Science, Mathematics, Computer Science and Physical Education.

Upon completion of the Singapore–Cambridge GCE O-Level examinations in Year 4, students can continue to study in Shelton Senior High for the Singapore–Cambridge GCE A-Level Examination. A "hands-on" learning approach through a well-structured two-year curriculum either in the Science or Commerce faculties prepares students for the A-Level Examination.

Students are taught team-building, creativity, value education, oral and social communication skills through the latest and most innovative methods of learning such as Multiple Intelligence and other universally accepted pedagogy.



Academic Programmes

Singapore-Cambridge GCE O-Level (Duration: 4 Years)

This course prepares students for the Singapore-Cambridge GCE O-Level Examination. This qualification is widely recognised and valued by employers, education authorities and institutions of higher education throughout the world.

The University of Cambridge Local Examinations Syndicate (UCLES) is the examining authority for subjects in English. The Singapore Examinations and Assessment Board (SEAB) is an established statutory board that develops and conducts national examinations in Singapore and provides other examination and assessment services, locally as well as overseas. SEAB collaborates with the Ministry of Education (MOE) on all national examinations and ensures the high quality of national standards is upheld.

Preparations for the O-Level Examination include monthly classroom assessments leading to the final examination conducted by SEAB.

With an O-Level qualification, students have options to progress to:

- 3-year UK (Hons) degree programme conducted at Shelton in collaboration with Staffordshire University (UK);
- University Foundation Studies at universities in the United Kingdom, United State and Australia;
- Singapore-Cambridge GCE A-Level;
- Diploma courses at polytechnics in Singapore.

Admission Criteria

- Aged 12 years & above as of 1st January in the year of registration and enrolment.
- Minimum English Language requirement of TOEFL 500 or IELTS 5.5 or 70% Shelton's English language placement test.

Course Subjects

- English Language
- Mother Tongue
- Principles of Accounts
- Elementary Mathematics
- Additional Mathematics
- Combined Science (Physics, Chemistry)



Singapore-Cambridge GCE A-Level (Duration: 2 Years)

The Singapore-Cambridge GCE A-Level curriculum emphasizes not only on learning but also focuses in ensuring flexibility. Instruction in these subjects will be student-centred. Subjects offered are at the H1 and H2 levels, depending on the capability of students. H2 is equivalent to the previous Singapore-Cambridge GCE A-Level subjects in terms of academic demand and rigor. H1 subject has about half the content of H2, but the content would be studied to the same depth as it is at H2. This tiered structure provides the opportunity for students to achieve their personal peaks of excellence.

This programme is widely recognized and valued by employers, education authorities and institutions of higher education throughout the world.

The University of Cambridge Local Examinations Syndicate (UCLES) is the examining authority for subjects in English. Similar to the Singapore-Cambridge GCE O-Level, the Singapore-Cambridge GCE A-Level Examinations is also a MOE and SEAB-approved programme.

Admission Criteria

- Aged 16 years & above as of 1st January in the year of registration and enrolment.
- Minimum English Language requirement of TOEFL 500 or IELTS 5.5 or 70% Shelton's English language placement test.

Core Subjects

- General Paper

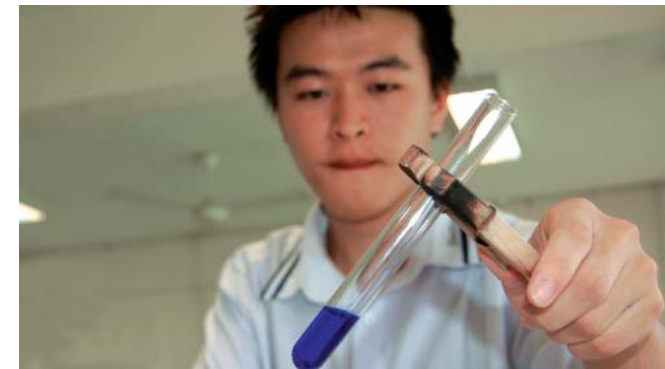
Commerce Stream (H2)

- Management of Business
- Principles of Accounts
- Mathematics (H1)
- Economics

Science Stream (H2)

- Physics
- Chemistry
- Mathematics
- Economics (H1)

Throughout the entire duration of the course, students will undergo monthly classroom assessments leading up to the final examination conducted by SEAB.



b. Sports, Arts and Community Service

Shelton High's Co-curriculum Activity (CCA) and Community Involvement Programme (CIP) are important aspects of Shelton High's unique and holistic educational learning experience.

Co-curricular Activity

Co-curriculum Activity (CCA) promotes teamwork, character building and a healthy lifestyle physically and mentally for the students. CCAs instill active social interaction and subsequently help the students to develop important qualities such as leadership, healthy lifestyle, self-discipline and self-confidence.

The CCAs are grouped into three parts:

Sports	Arts	Co-Academic
<ul style="list-style-type: none"> • Badminton • Tennis • Basketball • Soccer 	<ul style="list-style-type: none"> • Drama • Dance • Singing • Painting • Indoor/Traditional Games 	<ul style="list-style-type: none"> • Shelton Entrepreneurs • Gravel Toastmasters' Club • English Society • Maths & Science Society • Leos Club • Computer Club

Goals:

To provide an all-round education for students in Shelton High & Shelton College International.

Objectives:

- To expose students to various activities that will make their education in Shelton more interesting and meaningful.
- To mould students into holistic beings after leaving Shelton High or Shelton College International.
- To explore and uncover students' hidden potentials / talents apart from academic studies.
- To instill understanding and team spirit amongst students comprising of different ethnic groups and nationalities.
- To engage students in social work when needed so that they can engage the world with a sense of humanity.
- To foster students' creative, critical, initiative and soft skills.
- To make CCA a basis of Leadership Training.
- To establish networking.



Community Involvement Programme

Community Involvement Programme (CIP) encourages students to explore community involvement opportunities and make a difference in society through personal volunteering experiences.

Students are constantly inspired and touched by such meaningful charitable community events. This promotes cross-cultural unity and allows them to contribute to the society at large regardless of their nationalities.

Some of the activities students have participated in are:

• Food Distribution

Students extend a helping hand to the senior citizens in need and families whose income is lower than S\$1,500 per month within the Bukit Merah community by distributing food and vouchers.

• Terrarium Project

Students take part in the Terrarium-making Contest as part of the green initiative launched by the Singapore Environment Council and the Radin Mas Citizen Consultative Committee.

The first session has the students helping senior citizens with their terrariums at the Moral Senior Activities Centre at Redhill and the second one is with fellow students at the Radin Mas Community Club.

• One with the Police

Students work closely with the neighborhood police force in connection with crime prevention and participate in the opening ceremony of the Marina Bay Neighborhood Police Station.

• Flag Day

The Shelton College International Student Organisation (SCISO) students raise funds for the special needs kids by signing up for the YMCA Flag Day.

• Chinese New Year Celebrations

Student volunteers take part in Radin Mas Community Club activities and assist the elderly and those in need.





Enrichment Programmes

Golf @ Shelton



Golf is a leisure sport suitable for people of all ages. It is a great social experience and provides the golfer with physical exercise in a natural environment. No matter what your ability level, you are guaranteed to have fun and excitement playing golf!

Shelton High's partner golf school has quality golf instructors to train golf players in an innovative and systematic way. Our success in golf is built on a renowned and effective approach.

Beginner Package

- 6-8 persons per class
- 8 lessons, hourly lessons, once a week

Lesson 1 Model Swing – Part 1&2
 Lesson 2 Model Swing – Part 3&4
 Lesson 3 Short Iron Swing
 Lesson 4 Long Iron Swing
 Lesson 5 Wood Swing
 Lesson 6 Chipping
 Lesson 7 Putting
 Lesson 8 Review & Test

* Only the introduction & beginner package include golf equipment. Students are advised to get their own golf sets after completing the beginner package.

Intermediate Package

- 4 persons per class
- 8 lessons, hourly lessons, once a week

Lesson 1 Model Swing
 Lesson 2 Power Impact
 Lesson 3 Direction Control
 Lesson 4 Increase Swing Speed
 Lesson 5 Chipping
 Lesson 6 Green Studies & Putting Skill
 Lesson 7 Game Plan
 Lesson 8 9 Hole on Course Training (Green fee not included)

Advanced Package

- Lessons are based on 1 student to 1 instructor
- Lessons are carried on 3 different levels

Level 1: Break 100
 Level 2: Break 90
 Level 3: Break 80

Students have to pass the minimum requirement test before they can register for the advanced Package. Lessons are especially designed with each individual student in mind. Lessons are provided until the target is reached.

Music @ Shelton Discover Music

Throughout the ages, children have been introduced to different genre of music. There is a belief that children learn better if they are placed in what is called an 'enriched environment' - an environment which stimulates the senses through, sound, touch, colour and pictures. Music at Shelton High creates this 'enriched environment'. An integral part of its commitment to value education is to mould students into well-rounded individuals who are able to balance academic excellence with creative endeavours like music.

Course Structure and Assessment

- Students will learn the theory, history and technical aspects of music.
- Student will be assessed at the end of each module.
- Certificates are awarded after each internal examination.
- Music Instructors prepare students for examinations administered by the
- London-based Associated Board of the Royal School of Music or Trinity College.

Opportunities

- Students will participate in master classes and workshops.
- Selected students will be enrolled in the stringed ensemble rehearsals and concerts.
- Students will participate in local and international musical festivals and competitions.
- Students will be able to attend musical summits held in countries including; China, Hong Kong, Vienna, Germany, England and Australia for 7 to 10 days.

Lessons Offered

- Piano (individual)
- Violin (individual or group)
- Viola (individual or group)
- Cello (individual or group)
- Double bass (individual or group)



Chinese Language @ Shelton

Learn Chinese with me

跟
我
学
华
语

Chinese is the most widely-spoken language in the world today. As China has the world's biggest trading market, knowledge of Chinese Language is an invaluable asset for international business and one's future career prospects.

Business leaders are always on the lookout for professionals who are at least bilingual. Being a global giant in economy, China needs professionals from all over the world who has insight into the Chinese culture. There are over 40 million non-native Chinese speakers studying Chinese with great enthusiasm- if they can learn Chinese, so can you!

Level I:

Course Duration: 36 lessons; 144 hours

Lesson Duration: approx. 4 hours

Course Units: 1-18 focus on Pinyin, listening exercises, sound differentiation, oral reading, literacy, writing and communication in personal expression. 19-36 are communication tasks, which are practical.

Level II:

Course Duration: 30 lessons; 150 hours

Lesson Duration: approx. 5 hours

Course Units: Students should be able to express themselves orally using single sentences.

Level III:

Course Duration: 30 lessons; 150 hours

Lesson Duration: approx. 6 hours

Course Units: Students are able to express themselves orally in paragraphs and read simple passages.

Level IV:

Course Duration: 30 lessons; 150 hours

Lesson Duration: approx. 7 hours

Course Units: The spoken and reading skills should be adequate for the Intermediate level. Students will be encouraged to take the Chinese Proficiency Test (HSK).

About HSK

The Chinese Proficiency Test (HSK), designed by Beijing University, is a national standardised Chinese Language Test for those whose mother tongue is not Chinese.

About the Teacher

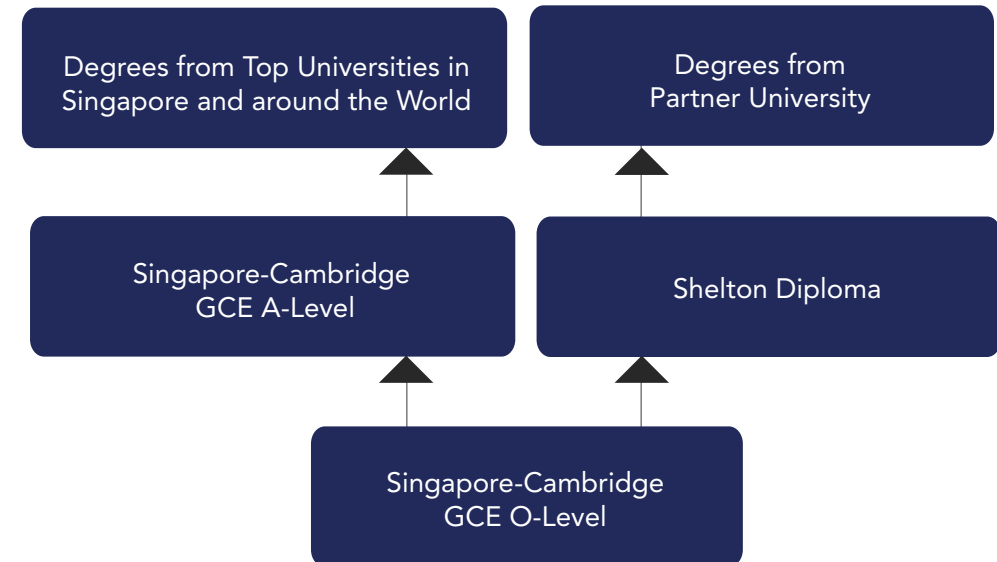
Li Suqin is a full-time Chinese Language lecturer with a diploma in Chinese, who has scored more than 92.3 in the National Chinese proficiency Test. With several years' experience in teaching, Ms. Li Suqin is well-loved by her students and respected by parents.



3.

What's Next?

The Shelton High Pathway



4. Living in Singapore

Singapore is among one of the best places to live in the world. It offers high, yet affordable standard of living. Singapore has been consistently rated by Transparency International (global coalition against corruption) as one of least corrupt countries in the world. The living cost of Singapore is significantly lower than that of many developed countries such as Japan, Australia, UK and USA. Mercer ranked Singapore 1st for its quality of life in Asia (Mercer Quality of Living global city rankings 2009), as well as world 1st for city infrastructure in the same survey. Singapore is one of the most politically stable countries in the world.

The city-country comprises of tradition and modern features in all walks of life. It is a multi-cultural and multi-lingual country. Living conditions in Singapore are among the best in the world, with state-of-the-art facilities for education, shopping, sports and recreation. The Global Country Brand Index ranked Singapore as the world's second for its shopping, nightlife and dining. Singapore is one of the best-connected countries in the world, with excellent sea, air and telecommunication links.

What to do

Singapore as a Garden City offers many tourist and cultural attractions. The Singapore Flyer offers a spectacular view of the Island that will leave you spellbound. Sentosa, the Singapore Zoo, one of the world's few open concept zoos, the exciting Night Safari and Jurong Bird Park – one of the world's largest bird sanctuaries are highly rated tourist attractions.

There are also various cultural and heritage centres in Chinatown, Little India and Geylang Serai. The old streets of Chinatown are still being preserved; the Muslim characteristics are still evident in Arab Street; and Little India along Serangoon Road still has its distinct traditional ambiance of India. Furthermore, there are marks of the British colonial influence in buildings all around the city.



One must visit Fort Canning Park and the Singapore National Museum for a venture into local history or soak in the arts scene here by visiting art galleries and attending cultural events in the Esplanade or other venues.

Transportation

Travelling around Singapore is easy. The excellent public transport system provides an island-wide road network of buses, Mass Rapid Transit metro system (MRT), Light Rail Transit (LRT) and taxis. Traveling from Singapore to Malaysia by using the Johor-Singapore Causeway, Tuas Second Link and the railway transport system operated by Keretapi Tanah Melayu of Malaysia is easy. Links with Batam and Bintan, Indonesia, are provided by the state-of-the-art ferries. International airlines (including budget flights) have also made Singapore an international transport hub to various parts of the world.

Safety

Singapore is a safe city-country (rated by Bureau of Justice Statistics) by imposing strict laws on offenders. In line with protecting the country's reputation as a safe traveler's destination, the government has further tightened security measures due to terrorist attacks in the world recently.

Food

Singapore is a food paradise having delicious Oriental and Western cuisines, a combination from the different ethnic groups in the country. Seafood is most popular, with dishes like pepper crab, chili stingray and oysters. Different ethnic and religious people also form groups with more specific dietary preferences in Singapore. As there are many vegetarians, finding dishes without meat is not difficult.

Culture

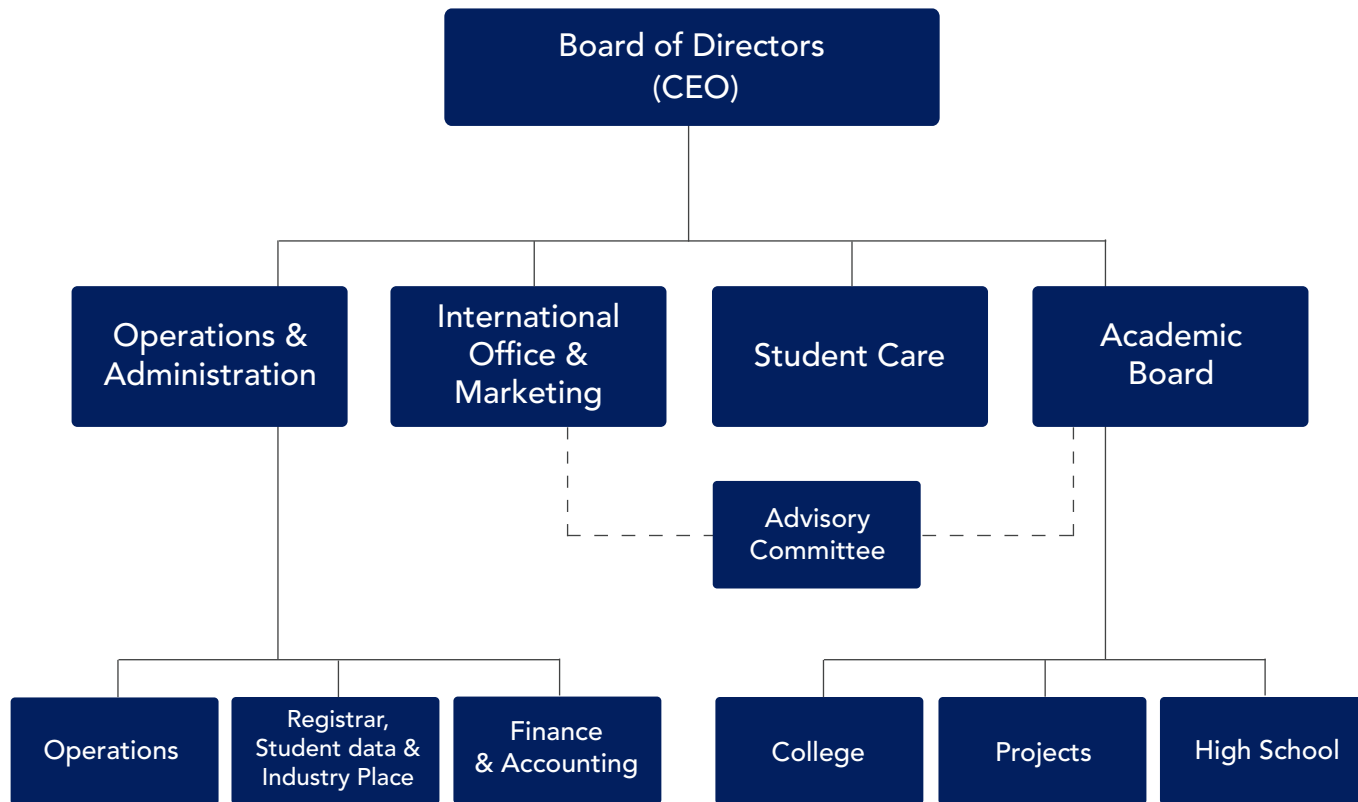
Singapore is a cosmopolitan city where Singaporeans have the opportunity to be engaged with different races and ethnic groups. The lifestyle of Singapore stems from the inherent cultural diversity of the island. The immigrants of the past have given the place a mixture of Malay, Chinese, Indian, and British influences, all of which have integrated into a unique culture. Nevertheless, traces of these ethnic cultures are still found in the heartlands of Singapore. As such, even the public holidays are distributed equally among all the cultures.

Fast Facts

- Capital: Singapore
- Languages: Mandarin, Malay, Tamil, English
- Population: 4,987,600 (2009 est.)
- Religions: Buddhist, Islam, Christian, Hindu, Sikh, Taoist, Confucianism
- Currency: Singapore Dollar (SGD)
- Major Events: Chinese New Year - January; Hari Raya Puasa - last three days of Ramadan; Festival of the Hungry Ghosts - September or October
- Singapore ranked Asia's city with the best quality of living



5. Shelton Organisation



Reach In, Reach Out, Reach Up
Shelton High, Your Pathway to University



Shelton High

1 Telok Blangah Rise Singapore 098888.

Tel (65) 6334-1330 Fax (65) 6337-4208

web@sheltonsc.com

www.sheltoncollege.edu.sg

■ NOBODY GETS LEFT BEHIND

